

P

Paulmann

Safety Instructions



0,1,2,3,4,6,7,9,11,
15,16,22,23,26,27



Info Hotline

+49 (0) 5041 998 389

Mon. - Fr. 9^h - 20^h

Sa. 10^h - 18^h

Paulmann Licht GmbH
32832 Springe / Germany
www.paulmann.com

Art.-No.:
461.01

1986 176

Rev. 02/12



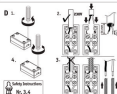
Safety Instructions
Nr. 0,1,2



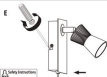
Safety Instructions
Nr. 0,1,2



Safety Instructions
Nr. 4



Safety Instructions
Nr. 3,4



Safety Instructions
Nr. 4

A, B, C, D, E

